

# SRV & HPV Valves

*Solid, Dependable, Reliable Valves,  
Whether the Need is Heavy Duty or Economy*



## TABLE OF CONTENTS

### SRV Valves

Product Overview ..... 3

Product Features and Benefits ..... 3

Product Comparisons ..... 4

Product Performance ..... 5

Installation ..... 5

Technical Information ..... 5

### HPV Valves

Product Overview ..... 6

Product Features and Benefits ..... 6

Product Comparisons ..... 8

Product Performance ..... 8

Installation ..... 9

Technical Information ..... 9

## PRODUCT OVERVIEW

The SRV is a remarkable valve that features a durable, high-grade PVC globe body and rugged diaphragm. These quality parts come together to form a component that will provide the residential system with solid construction and dependable performance...for an exceptionally affordable price. Hunter's Simple and Reliable Valve, the SRV is available either with or without a flow control. Other features include internal manual bleed to keep the valve box dry, a diaphragm support to prevent stress failure, and the improved Heavy Duty Hunter solenoid. When reliability and economy are factors, the SRV is the smart choice.



## PRODUCT FEATURES AND BENEFITS

### ***Optional Adjustable Flow Control...*** *Facilitates zone pressure control and flow management*

The SRV can be ordered with or without optional flow control.



With the optional flow control, zone water pressure and flow can be managed right at the valve for optimum efficiency. Users can utilize a removable flow control handle to make the flow adjustment a quick and easy process.

### ***Improved Heavy Duty Solenoid...*** *Long life, reliable operation*

The SRV has a new, improved solenoid that ensures long lasting reliability. The captive solenoid plunger eliminates lost parts during service, so there will never be the worry of springs, plungers or O-rings falling into muddy valve boxes.



### ***Internal Manual Bleed...*** *Keeps valve box dry*

For quick and dry manual operation, a  $\frac{1}{4}$  turn of the SRV solenoid allows water to flow through the valve and into the system. This internal bleed operation mimics how the valve performs electrically, keeping the valve box dry. No mess, no fuss.

### ***High Grade PVC Construction...*** *Rugged and reliable*

With its high grade PVC construction, the SRV will withstand the rigors of various climates and locations.

## PRODUCT FEATURES AND BENEFITS *(cont.)*

### *Self-Flushing Filtering System...*

*Handles dirty water with ease*

The SRV has a unique filtering system that keeps all dirty water from entering the upper chamber of the valve. This in turn prevents dirty water from entering the solenoid chamber. No plugging of the solenoid ports means reliable on/off operation.

### *Optional Slip Version...*

*Direct solvent weld connection to PVC pipe*

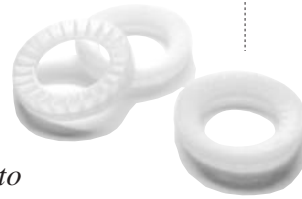
For systems installed with PVC pipe, contractors can directly glue the line into the valve, saving installation time and extra fittings.



### *Fully Supported and Captive Diaphragm...*

*Prevents stress failure due to high pressures*

The SRV diaphragm is fully captive and rests upon a sturdy diaphragm support ring. High pressures and rigorous flow can often damage diaphragms but our support ring prevents premature failure.



### *Wide Flow Range...*

*Drip to medium size applications*

With a flow range of 1 to 30 gpm (0.23 to 6.81 m<sup>3</sup>/hr; 3.8 to 113.6 l/min) the SRV valve is just right for residential installations whether it's drip, spray or rotor applications.

## PRODUCT COMPARISONS

FEATURES	Hunter SRV	Hardie 2400	Hardie 205	Nelson 7900	Rain Bird DV	Toro Flo-Pro	Weathermatic 12000
Internal Bleed	✓			✓	✓	✓	✓
Slip x Slip Body Cap Available	✓	✓	✓		✓	✓	✓
Captured Diaphragm	✓			✓			
Sturdy Diaphragm Support Ring	✓	✓	✓	✓	✓	✓	
One Piece Solenoid Assembly	✓	✓	✓	✓	✓	✓	
Encapsulated Solenoid Plunger	✓	✓	✓		✓	✓	
Optional Flow Control	✓	✓	✓	✓	✓	✓	✓
PVC Construction	✓	✓	✓		✓	✓	✓

### PRODUCT EXPLANATION

EXAMPLE: **SRV - 100G - S**

#### MODEL

**SRV-100G** = 1",  
Globe, no flow  
control

**SRV-101G** = 1",  
Globe, with flow  
control

#### OPTIONS

**S** = Slip x Slip  
**B** = BSP Threads

*Extra flow control handles can be ordered as Hunter part number 05-2692*

## PRODUCT PERFORMANCE

Pressure Loss in PSI		Pressure Loss in Bars		Pressure Loss in kPa	
GPM	1" Globe	m <sup>3</sup> /hr.	1" Globe	l/min	1" Globe
1	1.9	0.23	0.13	3.8	13.1
5	2.5	1.14	0.17	18.9	17.2
10	2.5	2.27	0.17	37.9	17.2
15	2.5	3.41	0.17	56.8	17.2
20	3.8	4.54	0.26	75.7	26.2
25	5.5	5.68	0.38	94.6	37.9
30	7.0	6.81	0.48	113.6	48.3

## TECHNICAL INFORMATION

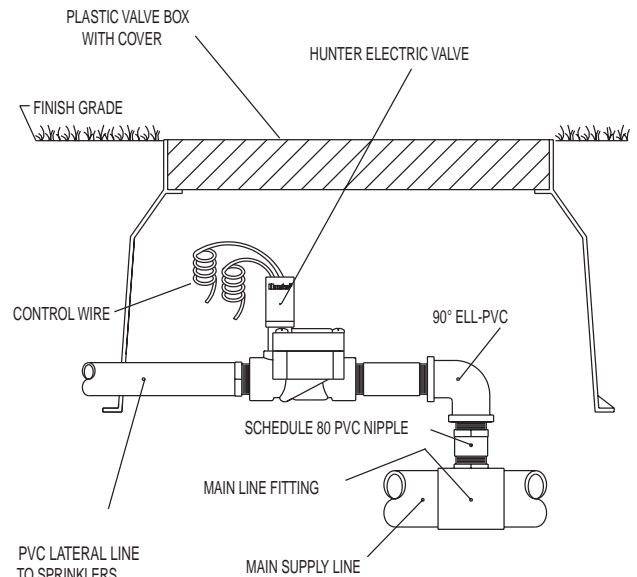
### Operating Specifications

- Flow: 1 to 30 gpm (0.23 to 6.81 m<sup>3</sup>/hr; 3.8 to 113.6 l/min)
- Pressure: 20 to 150 psi (1.4 to 10.3 bars; 138 to 1034 kPa)
- Heavy duty standard solenoid: 24VAC, 50/60 cycles, 400mA inrush current, (0.400A, 9.6VA); 270mA holding current (0.270A, 6.5VA)

### Dimensions

- Height: 5" (13 cm)
- Length: 4 1/2" (11 cm)
- Width: 2 1/2" (6 cm)

## INSTALLATION



**Hunter®** SRV-GLOBE

## PRODUCT OVERVIEW

The HPV is the plastic valve that's built to take high pressures and dirty water in residential and commercial applications. A feature rich valve, the HPV is a long lasting, heavy duty performer. The unique filtering system of the HPV allows for superior dirty water performance, while also slowing the closing speed to reduce the possibility of water hammer. All the while, the rigid internal support helps prevent stress failure in high pressure situations. Hunter's HPV has low-flow capability for effective drip applications as well as an optional flow control to help tune the system. Plus — and this is great news if you have ever lost a part of a valve — the HPV has more captive parts than can be imagined! **Captive solenoid plunger...captive diaphragm...captive bonnet screws...**that means losing important parts in muddy, wet valve boxes will never occur. The HPV is the tough valve for all applications.

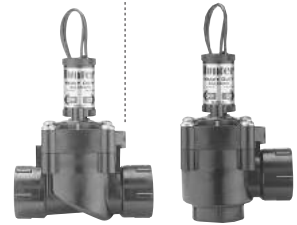


## PRODUCT FEATURES AND BENEFITS

### ***Angle or Globe Models...***

*Versatility for any installation*

The HPV can be ordered in a globe or angle configuration and comes with 1" threaded or slip inlet and outlet openings.



### ***Improved Heavy-Duty Solenoid...***

*Long life, reliable operation*

The HPV now has a new, improved solenoid that ensures long lasting reliability. What was once only a contractor's dream is now the HPV's captive solenoid plunger O-ring which enables easy servicing of the solenoid but eliminates the chance for any lost parts (no springs, plungers or O-rings falling into muddy valve boxes here).



### ***Internal Manual Bleed...***

*Keeps valve box dry*

For fast manual operation, a quick 1/4 turn of the HPV solenoid allows the water to flow through the valve and out the sprinklers. No water leaks out into the valve box because of the internal manual bleed. This internal-bleed operation mimics how the valve performs electrically. No mess, no fuss.



## ***Captive Bonnet Screws...***

*No more lost parts*

When servicing is required, the user can rest easy knowing that parts can't get lost in the mud. That's because the HPV screws are captive in the bonnet assembly! And, when it's time to put the valve back together, there is no worry about cross-threading the screws since the threads are molded into the valve body.

## ***Fully Supported and Captive Diaphragm...***

*Prevents stress failure due to high pressures*

When the HPV is disassembled, the user will find the diaphragm is fully captive and rests upon a sturdy diaphragm support ring. High pressures and rigorous flow can often damage diaphragms, but our support ring prevents premature failure.

## ***Wide Flow Range...***

*Drip to medium size applications*

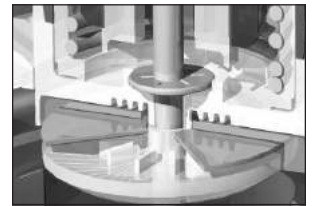
With a flow range of .4 to 40 gpm (0.09 to 9.1 m<sup>3</sup>/hr; 1.5 to 151.4 l/min) the HPV valve is just right for residential and commercial jobs whether it's drip or sprinkler applications.



## ***Self-Flushing Filtering System...***

*Handles dirty water with ease*

The HPV has a unique "poker-chip" filtering device that keeps all dirty water from entering the upper chamber of the valve. No dirt particles means no plugging of the solenoid ports nor damage to the diaphragm. Once the water passes through the filter disk, it makes its way through a tortuous path which ensures slow closure, thus eliminating possible water hammer.



## ***Optional Adjustable Flow Control...***

*Facilitates zone pressure control and flow management*

The HPV can be ordered with or without optional flow control. With the optional flow control, zone water pressure and flow can be managed right at the valve for optimum efficiency. Users can utilize a removable flow control handle to make the flow adjustment a quick and easy process.



## PRODUCT COMPARISONS

FEATURES	Hunter HPV	Hardie 2400	Hardie 700	Hardie 205	Nelson 7900	Rain Bird DV	Rain Bird PEB	Toro Flo-Pro	Toro 252	Weathermatic 11000	Weathermatic 12000
Internal Manual Bleed	✓		✓		✓	✓	✓	✓		✓	✓
Slip x Slip Body Available	✓	✓		✓		✓		✓			✓
Captive Bonnet Screws	✓	N/A			✓			N/A			
Molded Body Threads for Bonnet Screws	✓						✓			✓	✓
Captured Diaphragm	✓				✓						
Sturdy Diaphragm Support ring	✓	✓		✓	✓	✓	✓	✓	✓		
Encapsulated Solenoid Plunger	✓	✓	✓	✓	✓	✓	✓	✓			
Optional Flow Control	✓	✓	✓	✓	✓	✓	✓	✓	✓	✓	✓
Angle Configuration Available	✓	✓			✓	✓		✓	✓		
Drip Compatible	✓		✓			✓	✓	✓		✓	✓

## PRODUCT EXPLANATION

EXAMPLE: **HPV - 101 - G - S**

MODEL	CONFIGURATION	OPTIONS
HPV-100 = 1", no flow control	A = Angle G = Globe	S = Slip x Slip (globe only) B = BSP Threads
HPV-101 = 1", with flow control		

*Hunter flow control handle can be ordered as Hunter part number 05-2692*

## PRODUCT PERFORMANCE

Pressure Loss in PSI			Pressure Loss in Bars			Pressure Loss in kPa		
GPM	1" Globe	1" Angle	m <sup>3</sup> /hr.	1" Globe	1" Angle	l/min	1" Globe	1" Angle
1	1.0	1.0	0.23	0.1	0.1	3.8	6.9	6.9
5	2.0	1.5	1.14	0.1	0.1	18.9	13.8	10.3
10	2.0	1.7	2.27	0.1	0.1	37.9	13.8	11.7
15	1.8	1.4	3.41	0.1	0.1	56.8	12.4	9.7
20	2.5	1.5	4.54	0.2	0.1	75.7	17.2	10.3
25	3.6	2.0	5.68	0.2	0.1	94.6	24.8	13.8
30	5.5	2.9	6.81	0.4	0.2	113.6	37.9	20.0
35	7.7	4.2	7.95	0.5	0.3	132.5	53.1	29.0
40	10.5	5.7	9.09	0.7	0.4	151.4	72.4	39.3



## TECHNICAL INFORMATION

### *Operating Specifications*

- Flow: .4 to 40 gpm  
(0.09 to 9.1 m<sup>3</sup>/hr;  
1.5 to 151.4 l/min)
- Pressure: 20 to 150 psi  
(1.4 to 10.3 bars; 138 to 1034 kPa)
- Heavy-duty standard solenoid:  
24VAC, 50/60 cycles, 400mA inrush  
current, (0.400A, 9.6VA); 270mA  
holding current (0.270A, 6.5VA)

### *Dimensions*

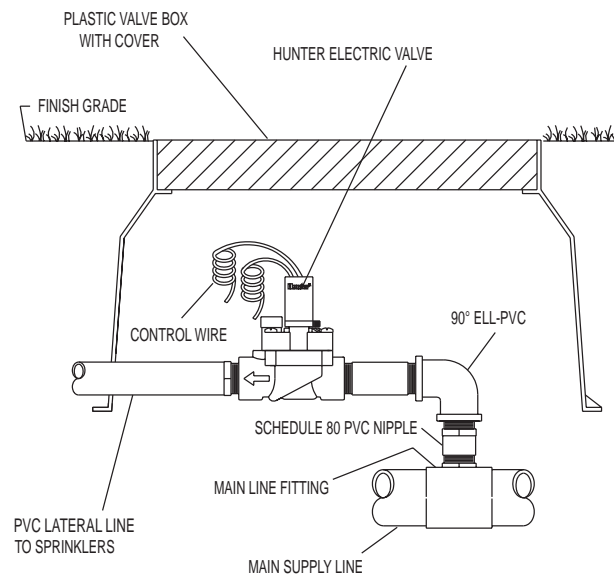
#### Globe Valve

- Height: 5 1/4" (13 cm)
- Length: 4 1/2" (11 cm)
- Width: 2 3/4" (7 cm)

#### Angle Valve

- Height: 5 1/2" (14 cm)
- Length: 3 1/2" (9 cm)
- Width: 2 3/4" (7 cm)

## INSTALLATION



**Hunter® HPV-GLOBE**

## NOTES





# Hunter®

---

Hunter Industries Incorporated • The Irrigation Innovators  
1940 Diamond Street • San Marcos, California 92069 • TEL: (1) 760-744-5240 • FAX: (1) 760-744-7461  
[www.HunterIndustries.com](http://www.HunterIndustries.com)

© 2001 Hunter Industries Incorporated  
P/N 700429 LIT-224.PDF 3/98